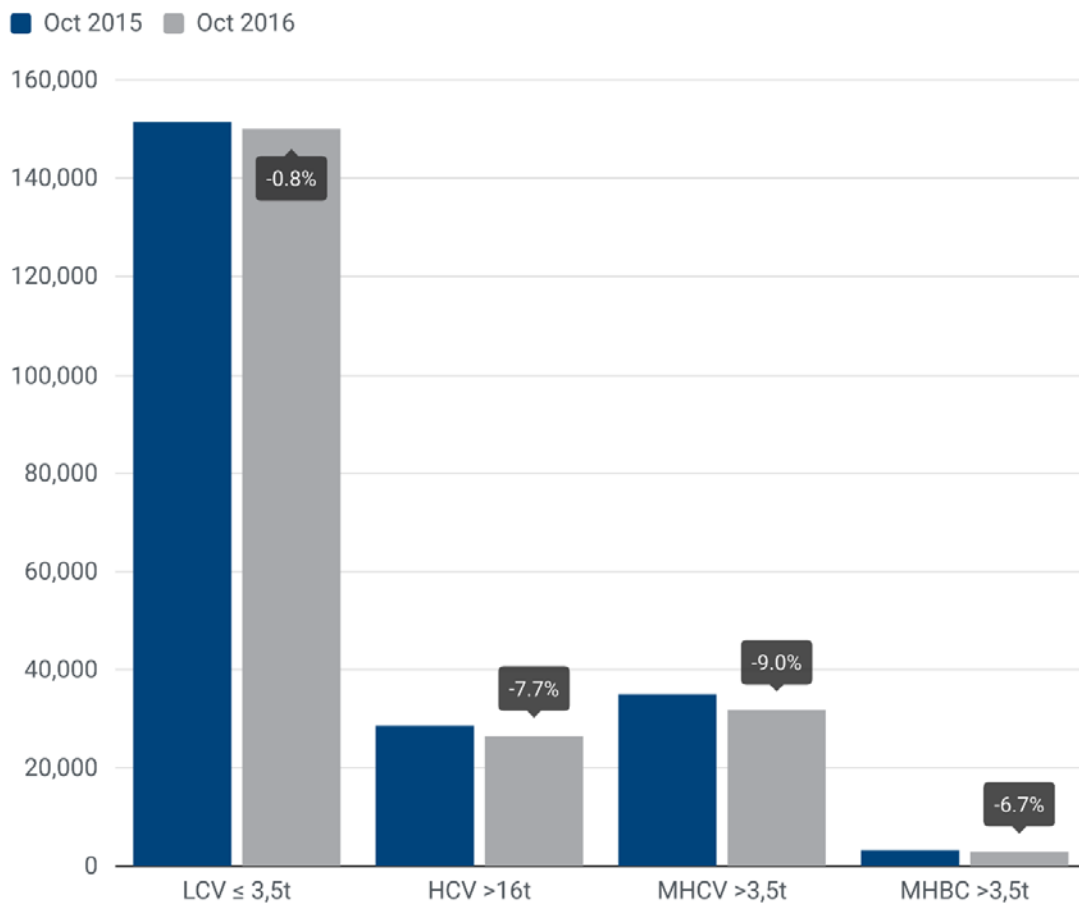


**PRESS EMBARGO: 8.00 AM (7.00 AM GMT), 25 November 2016**

**NEW COMMERCIAL VEHICLE REGISTRATIONS  
EUROPEAN UNION<sup>1</sup>  
October 2016**



**Next press release: Thursday 22 December 2016**

<sup>1</sup> Data for Malta unavailable

## Commercial vehicle registrations: +11.6% over ten months; -2.4% in October

### Total new commercial vehicles

In October 2016, demand for new commercial vehicles in the EU decreased by -2.4% to 185,055 units, breaking a 21-month trend of consecutive growth. The decline affected all segments and all major markets, except for Italy. In fact, the Italian market posted a double digit increase (+47.9%), while Germany (-15.0%), the UK (-6.4%), Spain (-5.7%) and France (-5.6%) saw registrations decline compared to October 2015.

Over the first ten months of 2016, new registrations in the EU nevertheless remained positive (+11.6%) thanks to gains in earlier months, totalling about 1.9 million vehicles. During that period, Italy (+41.1%), Spain (+10.8%), France (+8.3%), Germany (+8.1%), and the United Kingdom (+2.1%) all posted growth.

### New light commercial vehicles (LCV) up to 3.5 tonnes<sup>2</sup>

In October 2016, EU demand for light commercial vehicles flattened (-0.8%), totalling 150,189 units. This ended the streak of 37 consecutive months of growth in the segment. Demand was mainly driven by Italy (+47.7%), while Germany (-13.2%), France (-5.8%), Spain (-5.5%) and the UK (-4.5%) all saw demand for vans decline in October.

From January to October 2016, 1,572,863 new light commercial vehicles were registered in the EU, or 11.9% more than in the same period one year ago. Italy (+42.2%), Spain (+10.8%), Germany (+9.7%), France (+8.0%) and the UK (+2.0%) all contributed to this positive upturn over the first ten months of 2016.

### New heavy commercial vehicles (HCV) over 16 tonnes<sup>3</sup>

In October, registrations of new heavy commercial vehicle decreased (-7.7%) compared to October last year, totalling 26,324 units. Among the big five markets, Italy (+35.3%) showed the highest percentage growth, while demand for new HCVs in Germany (-17.4%), the United Kingdom (-16.3%), Spain (-8.7%) and France (-4.3%) dropped significantly.

Ten months into the year, demand for new heavy trucks continued to increase (+12.4%), with 244,303 new vehicles being registered in the EU. All major markets made a positive contribution to the overall upturn, especially the Italian (+37.0%) and French (+13.5%) ones with their double-digit increases.

### New medium and heavy commercial vehicles (MHCV) over 3.5 tonnes<sup>4</sup>

In October 2016, new truck registrations were down (-9.0%) compared to October last year. Overall, 31,853 new trucks were registered in the EU. Among the major markets, results for trucks were similar to those of the heavy truck segment, with Italy (+43.9%) showing the highest increase and all other major markets posting declines.

From January to October 2016, 300,228 new trucks were registered in the EU, 11.0% more than in the same period last year. Italy (+37.8%), France (+13.2%) and Spain (+9.4%) made a particularly significant contribution to this.

### New medium and heavy buses & coaches (MHBC) over 3.5 tonnes

In October 2016, new registrations in the bus and coach segment declined for the fifth consecutive month (-6.7%), totalling 3,013 units. Italy (+89.4%), Spain (+19.5%) and Germany (+3.6%) all posted growth, while France (-16.6%) performed less well than in October 2015.

Over the first ten months of 2016, the EU market for buses and coaches remained fairly stable (+0.5%), counting 32,311 newly registered vehicles. During this period, demand was primarily driven by Spain (+17.0%) and Germany (+13.2%), while France (-5.5%) saw demand decline.

---

<sup>2</sup> Including light buses and coaches

<sup>3</sup> Excluding heavy buses and coaches

<sup>4</sup> Excluding buses and coaches

# P R E S S   R E L E A S E

**PRESS EMBARGO FOR ALL DATA :**

**8.00 AM (7.00 AM GMT), 25 November 2016**

## PROVISIONAL

EU+EFTA<sup>1</sup> COUNTRIES NEW REGISTRATION FIGURES BY MARKET  
NEW LIGHT COMMERCIAL VEHICLES up to 3.5t<sup>2</sup>

25/11/16

	October '16	October '15	% Change	Jan-Oct '16	Jan-Oct '15	% Change
AUSTRIA	2,677	2,934	-8.8%	30,348	27,479	10.4%
BELGIUM	5,331	5,114	4.2%	58,127	52,344	11.0%
BULGARIA	430	343	25.4%	3,816	3,664	4.1%
CROATIA	656	638	2.8%	6,914	5,570	24.1%
CYPRUS	164	144	13.9%	1,556	1,190	30.8%
CZECH REPUBLIC	1,680	1,758	-4.4%	15,865	13,520	17.3%
DENMARK	2,636	2,804	-6.0%	30,502	26,239	16.2%
ESTONIA	311	311	0.0%	3,346	3,071	9.0%
FINLAND	1,041	960	8.4%	10,987	9,446	16.3%
FRANCE	33,036	35,088	-5.8%	331,780	307,236	8.0%
GERMANY	20,090	23,141	-13.2%	209,885	191,241	9.7%
GREECE	478	432	10.6%	4,686	4,625	1.3%
HUNGARY	1,556	1,586	-1.9%	17,025	13,355	27.5%
IRELAND	1,178	1,204	-2.2%	27,344	22,974	19.0%
ITALY	18,600	12,592	47.7%	149,200	104,900	42.2%
LATVIA	154	212	-27.4%	1,758	1,921	-8.5%
LITHUANIA	181	232	-22.0%	2,377	1,927	23.4%
LUXEMBOURG	376	360	4.4%	3,645	3,129	16.5%
NETHERLANDS	5,434	4,496	20.9%	60,884	49,510	23.0%
POLAND	4,632	4,951	-6.4%	49,007	41,920	16.9%
PORTUGAL	2,567	2,777	-7.6%	27,166	24,104	12.7%
ROMANIA	982	942	4.2%	11,362	8,623	31.8%
SLOVAKIA	590	771	-23.5%	6,236	5,685	9.7%
SLOVENIA	766	669	14.5%	7,866	5,950	32.2%
SPAIN	13,703	14,498	-5.5%	140,395	126,660	10.8%
SWEDEN	3,990	4,299	-7.2%	42,122	36,533	15.3%
UNITED KINGDOM	26,950	28,208	-4.5%	318,664	312,369	2.0%
<b>EUROPEAN UNION</b>	<b>150,189</b>	<b>151,464</b>	<b>-0.8%</b>	<b>1,572,863</b>	<b>1,405,185</b>	<b>11.9%</b>
<b>EU15<sup>3</sup></b>	<b>138,087</b>	<b>138,907</b>	<b>-0.6%</b>	<b>1,445,735</b>	<b>1,298,789</b>	<b>11.3%</b>
<b>EU12<sup>4</sup></b>	<b>12,102</b>	<b>12,557</b>	<b>-3.6%</b>	<b>127,128</b>	<b>106,396</b>	<b>19.5%</b>
ICELAND	127	91	39.6%	1,524	1,072	42.2%
NORWAY	2,864	2,892	-1.0%	27,244	25,757	5.8%
SWITZERLAND	2,180	2,449	-11.0%	25,101	25,748	-2.5%
<b>EFTA</b>	<b>5,171</b>	<b>5,432</b>	<b>-4.8%</b>	<b>53,869</b>	<b>52,577</b>	<b>2.5%</b>
<b>EU+EFTA</b>	<b>155,360</b>	<b>156,896</b>	<b>-1.0%</b>	<b>1,626,732</b>	<b>1,457,762</b>	<b>11.6%</b>
<b>WESTERN EUROPE (EU15+EFTA)</b>	<b>143,258</b>	<b>144,339</b>	<b>-0.7%</b>	<b>1,499,604</b>	<b>1,351,366</b>	<b>11.0%</b>

SOURCE: NATIONAL AUTOMOBILE MANUFACTURERS' ASSOCIATIONS

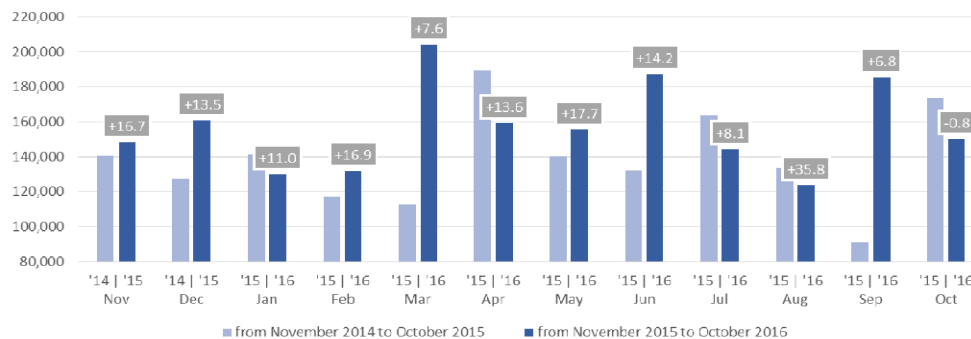
<sup>1</sup> Data for Malta unavailable

<sup>2</sup> Including Light Buses & Coaches

<sup>3</sup> Member States before the 2004 enlargement

<sup>4</sup> Member States having joined the EU since 2004

New light commercial vehicle registrations in the EU - 12 month trend



For further information, please contact: Ms Francesca Piazza - Statistics Manager - E-mail: fp@acea.be - Tel. (32) 2 738 73 55

This information is available on the ACEA website: <http://www.acea.be>

Next press release on Commercial Vehicles to be issued on Thursday 22 December 2016

**PRESS EMBARGO FOR ALL DATA :**

**8.00 AM (7.00 AM GMT), 25 November 2016**

## PROVISIONAL

EU+EFTA<sup>1</sup> COUNTRIES NEW REGISTRATION FIGURES BY MARKET  
NEW HEAVY COMMERCIAL VEHICLES of 16t and over<sup>2</sup>

25/11/16

	October '16	October '15	% Change	Jan-Oct '16	Jan-Oct '15	% Change
AUSTRIA	500	646	-22.6%	6,341	5,930	6.9%
BELGIUM	658	620	6.1%	7,130	5,964	19.6%
BULGARIA	N/A	N/A	N/A	N/A	N/A	N/A
CROATIA	92	66	39.4%	920	668	37.7%
CYPRUS	8	2	300.0%	36	20	80.0%
CZECH REPUBLIC <sup>3</sup>	787	948	-17.0%	7,777	7,207	7.9%
DENMARK	400	500	-20.0%	3,788	3,702	2.3%
ESTONIA	78	59	32.2%	761	606	25.6%
FINLAND	237	208	13.9%	2,207	1,813	21.7%
FRANCE	3,724	3,892	-4.3%	34,407	30,305	13.5%
GERMANY	4,955	6,000	-17.4%	54,664	52,032	5.1%
GREECE	10	44	-77.3%	175	197	-11.2%
HUNGARY	461	533	-13.5%	3,809	4,067	-6.3%
IRELAND <sup>4</sup>	117	112	4.5%	2,070	1,428	45.0%
ITALY <sup>5</sup>	1,548	1,144	35.3%	13,695	9,996	37.0%
LATVIA	180	190	-5.3%	1,285	1,132	13.5%
LITHUANIA <sup>4</sup>	432	451	-4.2%	5,240	3,163	65.7%
LUXEMBOURG <sup>4</sup>	115	116	-0.9%	1,017	888	14.5%
NETHERLANDS	1,057	1,175	-10.0%	12,198	10,833	12.6%
POLAND	2,234	2,270	-1.6%	20,086	16,361	22.8%
PORTUGAL	548	401	36.7%	3,346	2,713	23.3%
ROMANIA	639	617	3.6%	6,143	4,527	35.7%
SLOVAKIA	364	459	-20.7%	3,488	3,548	-1.7%
SLOVENIA <sup>4</sup>	222	208	6.7%	1,848	1,439	28.4%
SPAIN	2,835	3,105	-8.7%	16,505	15,495	6.5%
SWEDEN	544	486	11.9%	4,721	3,870	22.0%
UNITED KINGDOM <sup>4</sup>	3,579	4,277	-16.3%	30,646	29,475	4.0%
<b>EUROPEAN UNION</b>	<b>26,324</b>	<b>28,529</b>	<b>-7.7%</b>	<b>244,303</b>	<b>217,379</b>	<b>12.4%</b>
EU15	20,827	22,726	-8.4%	192,910	174,641	10.5%
EU12	5,497	5,803	-5.3%	51,393	42,738	20.3%
ICELAND	13	8	62.5%	124	99	25.3%
NORWAY <sup>4</sup>	365	368	-0.8%	3,645	3,335	9.3%
SWITZERLAND <sup>3</sup>	226	232	-2.6%	2,696	2,631	2.5%
EFTA	604	608	-0.7%	6,465	6,065	6.6%
<b>EU+EFTA</b>	<b>26,928</b>	<b>29,137</b>	<b>-7.6%</b>	<b>250,768</b>	<b>223,444</b>	<b>12.2%</b>
<b>WESTERN EUROPE (EU15+EFTA)</b>	<b>21,431</b>	<b>23,334</b>	<b>-8.2%</b>	<b>199,375</b>	<b>180,706</b>	<b>10.3%</b>

SOURCE: NATIONAL AUTOMOBILE MANUFACTURERS' ASSOCIATIONS

<sup>1</sup> Data for Malta unavailable

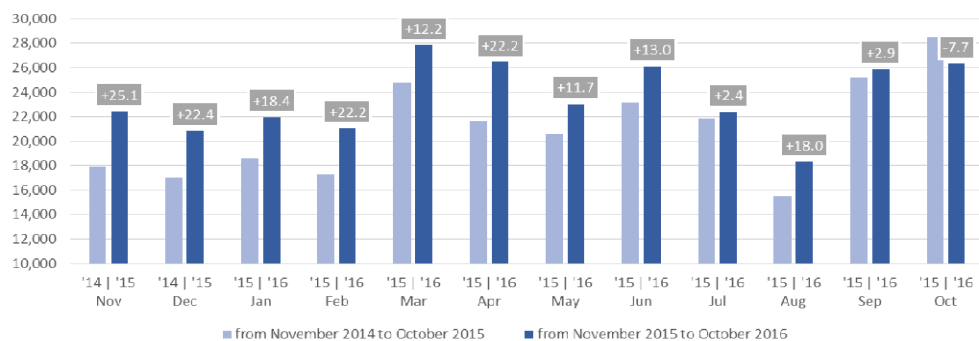
<sup>4</sup> Estimates

<sup>2</sup> Excluding Heavy Buses & Coaches

<sup>5</sup> ANFIA estimates based on vehicle registration certificates issued by the Italian Ministry of Transport

<sup>3</sup> Heavy Commercial Vehicles of 18t and over

New heavy commercial vehicle registrations in the EU - 12 month trend



For further information, please contact: Ms Francesca Piazza - Statistics Manager - E-mail: fp@acea.be - Tel. (32) 2 738 73 55

This information is available on the ACEA website: <http://www.acea.be>

**PRESS EMBARGO FOR ALL DATA :**

**8.00 AM (7.00 AM GMT), 25 November 2016**

## PROVISIONAL

### EU+EFTA<sup>1</sup> COUNTRIES NEW REGISTRATION FIGURES BY MARKET NEW MEDIUM & HEAVY COMMERCIAL VEHICLES over 3.5t<sup>2</sup>

25/11/16

	October '16	October '15	% Change	Jan-Oct '16	Jan-Oct '15	% Change
AUSTRIA	555	710	-21.8%	6,833	6,409	6.6%
BELGIUM	765	726	5.4%	8,372	7,271	15.1%
BULGARIA	N/A	N/A	N/A	N/A	N/A	N/A
CROATIA	106	73	45.2%	1,172	882	32.9%
CYPRUS	10	4	150.0%	52	40	30.0%
CZECH REPUBLIC	906	1,123	-19.3%	9,252	8,641	7.1%
DENMARK	445	533	-16.5%	4,225	4,047	4.4%
ESTONIA	83	63	31.7%	794	655	21.2%
FINLAND	304	263	15.6%	2,794	2,289	22.1%
FRANCE	4,263	4,369	-2.4%	39,872	35,211	13.2%
GERMANY	7,386	9,310	-20.7%	77,872	75,242	3.5%
GREECE	13	94	-86.2%	275	369	-25.5%
HUNGARY	489	570	-14.2%	4,147	4,408	-5.9%
IRELAND	117	138	-15.2%	2,421	1,782	35.9%
ITALY <sup>3</sup>	1,961	1,363	43.9%	17,585	12,765	37.8%
LATVIA	180	201	-10.4%	1,331	1,202	10.7%
LITHUANIA <sup>4</sup>	437	456	-4.2%	5,321	3,254	63.5%
LUXEMBOURG	126	121	4.1%	1,090	941	15.8%
NETHERLANDS	1,190	1,274	-6.6%	13,481	12,022	12.1%
POLAND	2,464	2,468	-0.2%	21,849	18,132	20.5%
PORTUGAL	595	443	34.3%	3,867	3,152	22.7%
ROMANIA	670	652	2.8%	6,451	4,752	35.8%
SLOVAKIA	413	501	-17.6%	3,903	3,836	1.7%
SLOVENIA <sup>4</sup>	230	223	3.1%	1,975	1,571	25.7%
SPAIN	3,075	3,350	-8.2%	19,863	18,149	9.4%
SWEDEN	598	547	9.3%	5,175	4,353	18.9%
UNITED KINGDOM <sup>4</sup>	4,472	5,411	-17.4%	40,256	39,100	3.0%
<b>EUROPEAN UNION</b>	<b>31,853</b>	<b>34,986</b>	<b>-9.0%</b>	<b>300,228</b>	<b>270,475</b>	<b>11.0%</b>
EU15	25,865	28,652	-9.7%	243,981	223,102	9.4%
EU12	5,988	6,334	-5.5%	56,247	47,373	18.7%
ICELAND	19	18	5.6%	235	178	32.0%
NORWAY	497	475	4.6%	5,034	4,524	11.3%
SWITZERLAND	293	303	-3.3%	3,497	3,343	4.6%
EFTA	809	796	1.6%	8,766	8,045	9.0%
EU+EFTA	32,662	35,782	-8.7%	308,994	278,520	10.9%
WESTERN EUROPE (EU15+EFTA)	26,674	29,448	-9.4%	252,747	231,147	9.3%

SOURCE: NATIONAL AUTOMOBILE MANUFACTURERS' ASSOCIATIONS

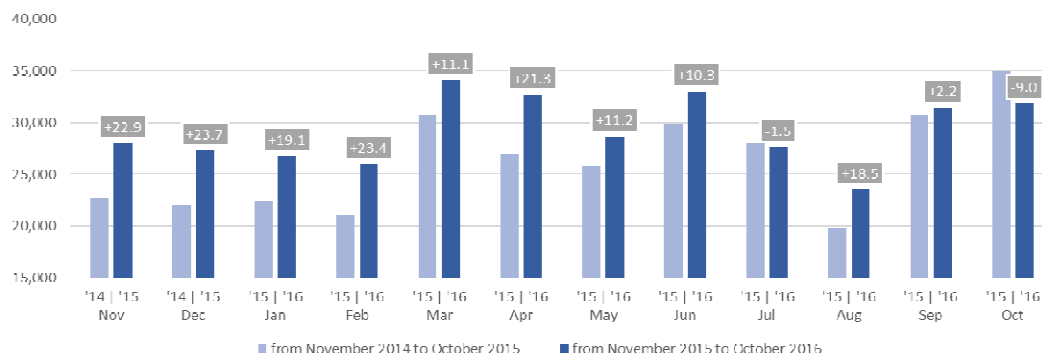
<sup>1</sup> Data for Malta unavailable

<sup>3</sup> ANFIA estimates based on vehicle registration certificates issued by the Italian Ministry of Transport

<sup>2</sup> Excluding total Buses & Coaches over 3.5t

<sup>4</sup> Estimates

### New medium and heavy commercial vehicle registrations in the EU - 12 month trend



For further information, please contact: Ms Francesca Piazza - Statistics Manager - E-mail: fp@acea.be - Tel. (32) 2 738 73 55

This information is available on the ACEA website: <http://www.acea.be>

# P R E S S   R E L E A S E

**PRESS EMBARGO FOR ALL DATA :**

**8.00 AM (7.00 AM GMT), 25 November 2016**

## PROVISIONAL

EU+EFTA<sup>1</sup> COUNTRIES NEW REGISTRATION FIGURES BY MARKET  
NEW MEDIUM & HEAVY BUSES & COACHES over 3.5t

25/11/16

	October '16	October '15	% Change	Jan-Oct '16	Jan-Oct '15	% Change
AUSTRIA	36	50	-28.0%	838	714	17.4%
BELGIUM	15	43	-65.1%	588	808	-27.2%
BULGARIA	N/A	N/A	N/A	N/A	N/A	N/A
CROATIA	6	9	-33.3%	164	107	53.3%
CYPRUS	N/A	N/A	N/A	N/A	N/A	N/A
CZECH REPUBLIC	80	177	-54.8%	796	954	-16.6%
DENMARK	81	28	189.3%	580	344	68.6%
ESTONIA	6	2	200.0%	163	181	-9.9%
FINLAND	40	31	29.0%	495	462	7.1%
FRANCE	488	585	-16.6%	5,606	5,930	-5.5%
GERMANY	540	521	3.6%	5,049	4,461	13.2%
GREECE	11	10	10.0%	175	113	54.9%
HUNGARY	15	133	-88.7%	330	407	-18.9%
IRELAND	11	15	-26.7%	352	281	25.3%
ITALY <sup>2</sup>	339	179	89.4%	2,167	2,088	3.8%
LATVIA	21	7	200.0%	123	195	-36.9%
LITHUANIA <sup>3</sup>	20	15	33.3%	241	183	31.7%
LUXEMBOURG	13	12	8.3%	188	246	-23.6%
NETHERLANDS	35	9	288.9%	345	314	9.9%
POLAND	102	106	-3.8%	1,536	1,318	16.5%
PORTUGAL	26	13	100.0%	311	232	34.1%
ROMANIA	72	232	-69.0%	936	2,055	-54.5%
SLOVAKIA	36	18	100.0%	315	227	38.8%
SLOVENIA <sup>3</sup>	11	9	22.2%	167	132	26.5%
SPAIN	245	205	19.5%	2,603	2,225	17.0%
SWEDEN	53	110	-51.8%	1,039	984	5.6%
UNITED KINGDOM <sup>3</sup>	711	711	0.0%	7,204	7,176	0.4%
<b>EUROPEAN UNION</b>	<b>3,013</b>	<b>3,230</b>	<b>-6.7%</b>	<b>32,311</b>	<b>32,137</b>	<b>0.5%</b>
<b>EU15</b>	<b>2,644</b>	<b>2,522</b>	<b>4.8%</b>	<b>27,540</b>	<b>26,378</b>	<b>4.4%</b>
<b>EU12</b>	<b>369</b>	<b>708</b>	<b>-47.9%</b>	<b>4,771</b>	<b>5,759</b>	<b>-17.2%</b>
<b>ICELAND</b>	<b>5</b>	<b>2</b>	<b>150.0%</b>	<b>213</b>	<b>102</b>	<b>108.8%</b>
<b>NORWAY</b>	<b>64</b>	<b>35</b>	<b>82.9%</b>	<b>1,257</b>	<b>728</b>	<b>72.7%</b>
<b>SWITZERLAND</b>	<b>54</b>	<b>82</b>	<b>-34.1%</b>	<b>512</b>	<b>561</b>	<b>-8.7%</b>
<b>EFTA</b>	<b>123</b>	<b>119</b>	<b>3.4%</b>	<b>1,982</b>	<b>1,391</b>	<b>42.5%</b>
<b>EU+EFTA</b>	<b>3,136</b>	<b>3,349</b>	<b>-6.4%</b>	<b>34,293</b>	<b>33,528</b>	<b>2.3%</b>
<b>WESTERN EUROPE (EU15+EFTA)</b>	<b>2,767</b>	<b>2,641</b>	<b>4.8%</b>	<b>29,522</b>	<b>27,769</b>	<b>6.3%</b>

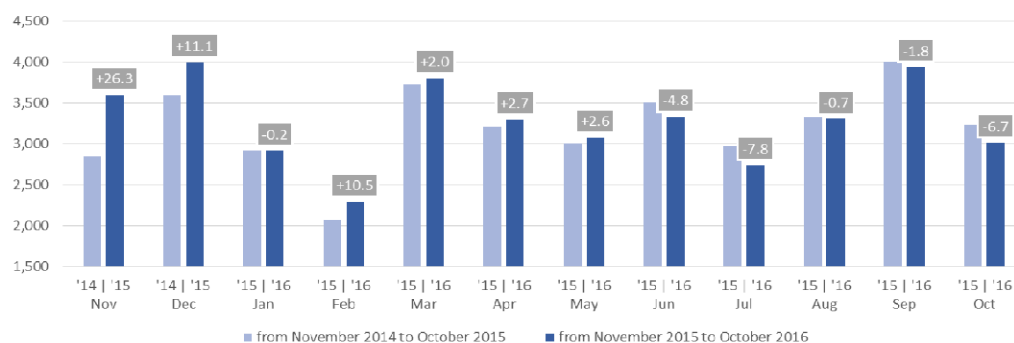
SOURCE: NATIONAL AUTOMOBILE MANUFACTURERS' ASSOCIATIONS

<sup>1</sup> Data for Malta unavailable

<sup>2</sup> ANFIA estimates based on vehicle registration certificates issued by the Italian Ministry of Transport

<sup>3</sup> Estimates

New medium and heavy buses & coaches registrations in the EU - 12 month trend



For further information, please contact: Ms Francesca Piazza - Statistics Manager - E-mail: fp@acea.be - Tel. (32) 2 738 73 55

This information is available on the ACEA website: <http://www.acea.be>

**PRESS EMBARGO FOR ALL DATA :**

**8.00 AM (7.00 AM GMT), 25 November 2016**

**PROVISIONAL**  
**EU+EFTA<sup>1</sup> COUNTRIES NEW REGISTRATION FIGURES BY MARKET**  
**TOTAL NEW COMMERCIAL VEHICLES<sup>2</sup>**

25/11/16

	October '16	October '15	% Change	Jan-Oct '16	Jan-Oct '15	% Change
AUSTRIA	3,268	3,694	-11.5%	38,019	34,602	9.9%
BELGIUM	6,111	5,883	3.9%	67,087	60,423	11.0%
BULGARIA <sup>3</sup>	430	343	25.4%	3,816	3,664	4.1%
CROATIA	768	720	6.7%	8,250	6,559	25.8%
CYPRUS <sup>4</sup>	174	148	17.6%	1,608	1,230	30.7%
CZECH REPUBLIC	2,666	3,058	-12.8%	25,913	23,115	12.1%
DENMARK	3,162	3,365	-6.0%	35,307	30,630	15.3%
ESTONIA	400	376	6.4%	4,303	3,907	10.1%
FINLAND	1,385	1,254	10.4%	14,276	12,197	17.0%
FRANCE	37,787	40,042	-5.6%	377,258	348,377	8.3%
GERMANY	28,016	32,972	-15.0%	292,806	270,944	8.1%
GREECE	502	536	-6.3%	5,136	5,107	0.6%
HUNGARY	2,060	2,289	-10.0%	21,502	18,170	18.3%
IRELAND	1,306	1,357	-3.8%	30,117	25,037	20.3%
ITALY <sup>5</sup>	20,900	14,134	47.9%	168,952	119,753	41.1%
LATVIA	355	420	-15.5%	3,212	3,318	-3.2%
LITHUANIA	638	703	-9.2%	7,939	5,364	48.0%
LUXEMBOURG	515	493	4.5%	4,923	4,316	14.1%
NETHERLANDS	6,659	5,779	15.2%	74,710	61,846	20.8%
POLAND	7,198	7,525	-4.3%	72,392	61,370	18.0%
PORTUGAL	3,188	3,233	-1.4%	31,344	27,488	14.0%
ROMANIA	1,724	1,826	-5.6%	18,749	15,430	21.5%
SLOVAKIA	1,039	1,290	-19.5%	10,454	9,748	7.2%
SLOVENIA	1,007	901	11.8%	10,008	7,653	30.8%
SPAIN	17,023	18,053	-5.7%	162,861	147,034	10.8%
SWEDEN	4,641	4,956	-6.4%	48,336	41,870	15.4%
UNITED KINGDOM	32,133	34,330	-6.4%	366,124	358,645	2.1%
<b>EUROPEAN UNION</b>	<b>185,055</b>	<b>189,680</b>	<b>-2.4%</b>	<b>1,905,402</b>	<b>1,707,797</b>	<b>11.6%</b>
EU15	166,596	170,081	-2.0%	1,717,256	1,548,269	10.9%
EU12	18,459	19,599	-5.8%	188,146	159,528	17.9%
ICELAND	151	111	36.0%	1,972	1,352	45.9%
NORWAY	3,425	3,402	0.7%	33,535	31,009	8.1%
SWITZERLAND	2,527	2,834	-10.8%	29,110	29,652	-1.8%
EFTA	6,103	6,347	-3.8%	64,617	62,013	4.2%
<b>EU+EFTA</b>	<b>191,158</b>	<b>196,027</b>	<b>-2.5%</b>	<b>1,970,019</b>	<b>1,769,810</b>	<b>11.3%</b>
<b>WESTERN EUROPE (EU15+EFTA)</b>	<b>172,699</b>	<b>176,428</b>	<b>-2.1%</b>	<b>1,781,873</b>	<b>1,610,282</b>	<b>10.7%</b>

SOURCE: NATIONAL AUTOMOBILE MANUFACTURERS' ASSOCIATIONS

<sup>1</sup> Data for Malta unavailable

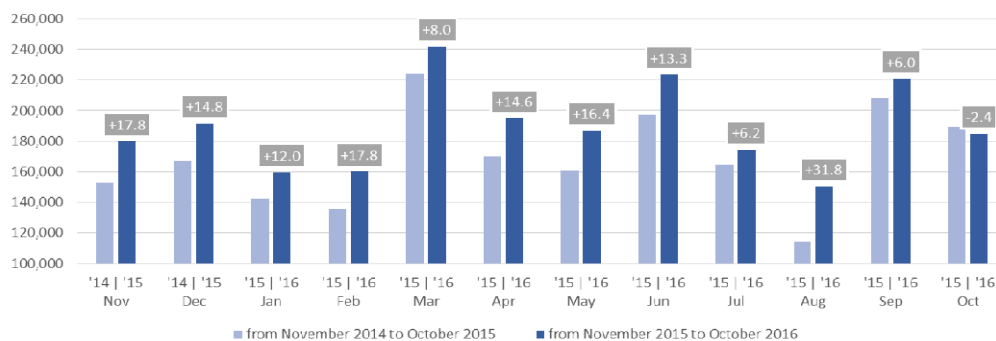
<sup>4</sup> Data for Buses & Coaches unavailable

<sup>2</sup> Total Light, Medium & Heavy Commercial Vehicles and Buses & Coaches

<sup>5</sup> ANFIA estimates based on vehicle registration certificates issued by the Italian Ministry of Transport

<sup>3</sup> Data for Medium & Heavy Commercial Vehicles and Buses & Coaches unavailable

Total new commercial vehicle registrations in the EU - 12 month trend



For further information, please contact: Ms Francesca Piazza - Statistics Manager - E-mail: fp@acea.be - Tel. (32) 2 738 73 55

This information is available on the ACEA website: <http://www.acea.be>